



D2L LUMI

Responsible AI Vision & Principles

Craig Fearon

Senior Director, Product Management

Safe Harbor Statement

- The information provided herein is confidential and proprietary to D2L Corporation and its affiliates (“D2L”) and may not be shared without the written consent of D2L.

Nothing herein should be construed as legal, human resources, insurance, tax, or other advice for any particular issue, including compliance with relevant laws. You must consult a professional advisor that is familiar with your particular factual situation for any such advice.

The information provided herein could include inaccuracies, and typographical and other errors. The information provided herein is subject to change at any time, at the discretion of D2L, and D2L makes no commitment to update the information.

- TO THE GREATEST EXTENT PERMITTED BY LAW, THE INFORMATION PROVIDED HEREIN IS PROVIDED “AS-IS” AND WITHOUT WARRANTY, AND ALL WARRANTIES OF ANY KIND, EITHER EXPRESS OR IMPLIED, INCLUDING WARRANTIES OF MERCHANTABILITY, FITNESS FOR A PARTICULAR PURPOSE, COMPLIANCE, RELIABILITY, SUITABILITY, NON-INFRINGEMENT, TITLE AND ANY WARRANTIES RESULTING FROM CUSTOM OR USAGE OF TRADE, OR COURSE OF PERFORMANCE OR DEALING ARE HEREBY DISCLAIMED, AND YOU AGREE TO WAIVE SUCH WARRANTIES.

D2L reserves all of its rights with respect to the information provided herein.

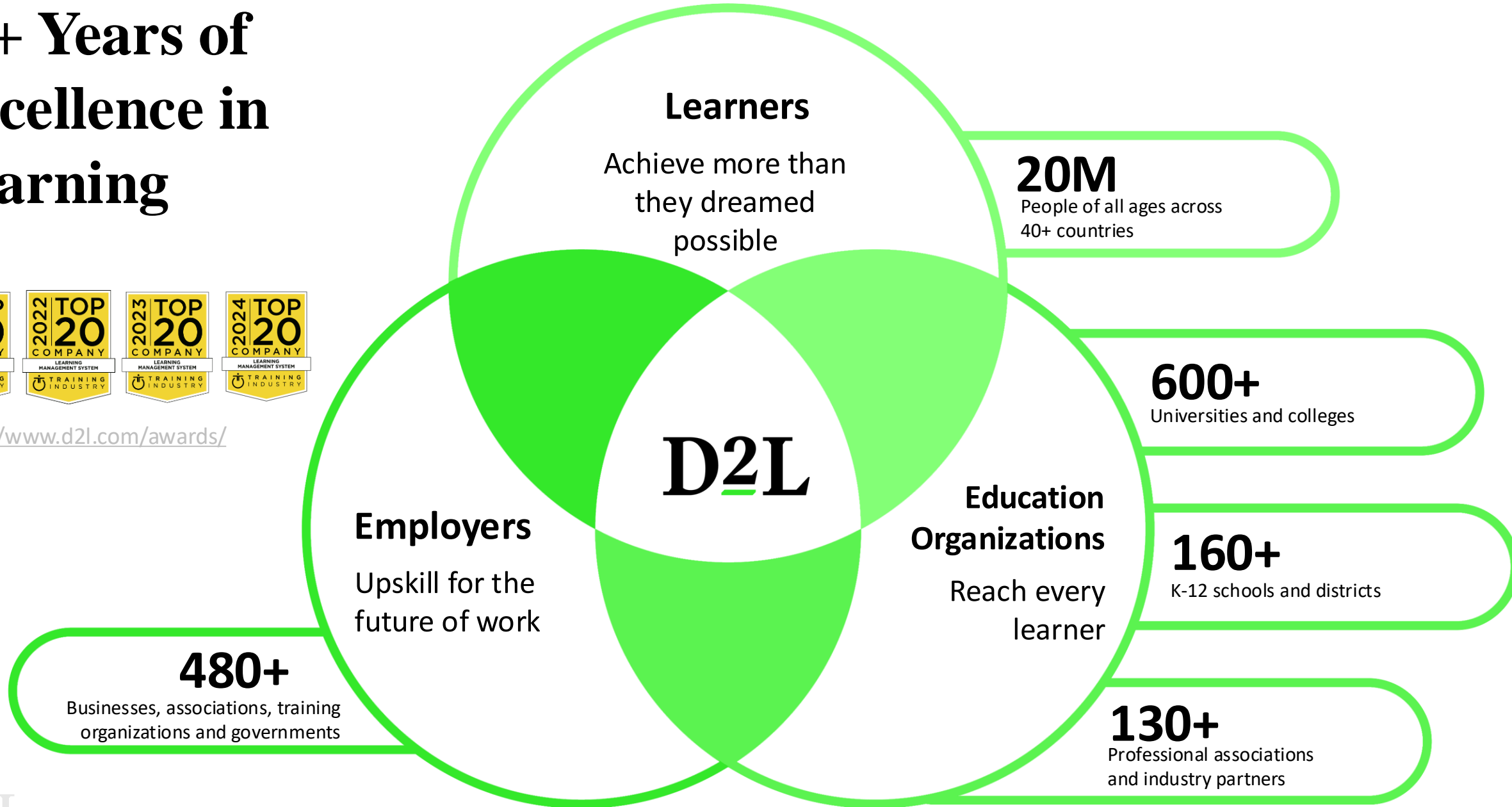
Agenda

- D2L: 25+ Years of Excellence in Learning
- Our AI Vision & Philosophy
- Leveraging AI in Brightspace Today
- Roadmap for AI
- Q&A

25+ Years of Excellence in Learning



<https://www.d2l.com/awards/>



D2L is your dedicated learning partner

20+ MILLION
LEARNERS

25+ YEARS
SINGULAR MISSION

40+ COUNTRIES

1000+ EMPLOYEES
WORLDWIDE

1300+ CUSTOMERS
AROUND THE GLOBE



<https://www.d2l.com/awards/>



Rapid Technological Change

Educators often have to learn new tools on their own, and this can be time-consuming, further reducing their capacity to focus on content development.

Other Duties

Educators are increasingly burdened with administrative tasks, from attending meetings and committee work to managing departmental responsibilities.

Large Class Sizes

Managing grading, feedback, and student interactions for a large cohort can be overwhelming, leaving little time for curriculum and lesson design

A few Challenges Educators are Facing

Some of the things that detract from the time spent teaching, creating & preparing lessons

Extracurricular Pressure

Educators are under pressure to assist in extra-curricular activities outside the classroom. This could be sports, school activities and other events that take them away from preparing lessons and plans. career and professional development obligations also add to this pressure.

Diversity of Student Needs

With more diverse student bodies, Educators are expected to accommodate a wide range of learning preferences, student backgrounds and needs.

Mental Health & Burnout

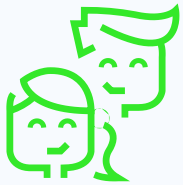
Many Educators are experiencing high levels of stress, burnout, and mental health issues due to the demands of balancing teaching, classroom dynamics and administrative work.

D2L Artificial Intelligence Vision

Responsible AI Principles

Vision

D2L has continued to pursue its mission to transform the way the world learns for more than a quarter-century. Embracing AI allows us to expedite this transformation, ensuring a more profound impact on learning.



Improve **ACHIEVEMENT**
for Students



Enhance
EFFICIENCY
for Educators and Course
Authors



Provide
INSIGHTS
for Academic Leaders

“

...this technology is a game changer. It's not here to replace us. It is here to elevate and scale the meaningful work we do.”

John Baker, CEO, D2L

D2L

Our Commitment to You



Privacy



Bias and Non-Discrimination



Security and Robustness



Transparency



Accountability

Learn more: [D2L Responsible AI Principles](#)

Available AI in Brightspace

Where we use AI today...

Lumi Chat

- Automate answers to FAQs about your organization or Brightspace.
- Surface information, resources and how-to guides users need, right when they need them.
- Reduce the volume of IT tickets and shorten wait times.

D2L BRIGHTSPACE Introduction to Astronomy - Fall 220...

Course Home Content Classlist Assignments Discussions Quizzes Chat Locker Grades Course Tools ▾ More ▾

Discussions Settings Help

[Discussions List](#) Subscriptions Group and Section Restrictions Statistics

[New ▾](#) [More Actions ▾](#)

Filter by: [Unread](#) [Unapproved](#) [Collapse All Forums ▾](#)

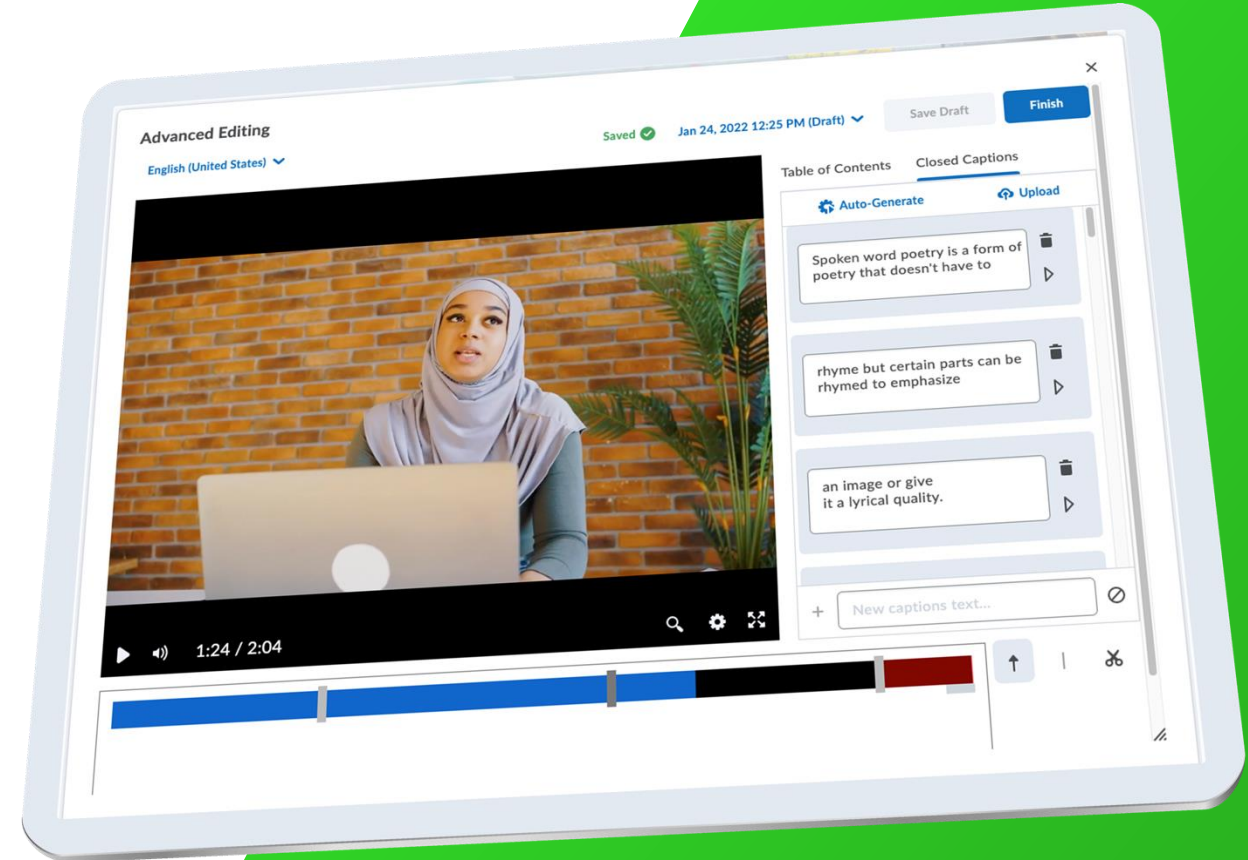
Week 1 Readings: Discussion Activity ▾

Topic	Threads	Posts	Last Post
Module 1 Discussion ▾			
Please post a new thread and answer the following questions:			
1. Identify a successful organization.			
2. Reflect on how this organization has been successful as a result of its marketing strategies.			
	0	0	
◦ Who is their target market>			
◦ What value is communicated to customers and how?			
Once you have posted your discussion, please respond to 2-3 of your classmates throughout the week.			

[Chat](#)

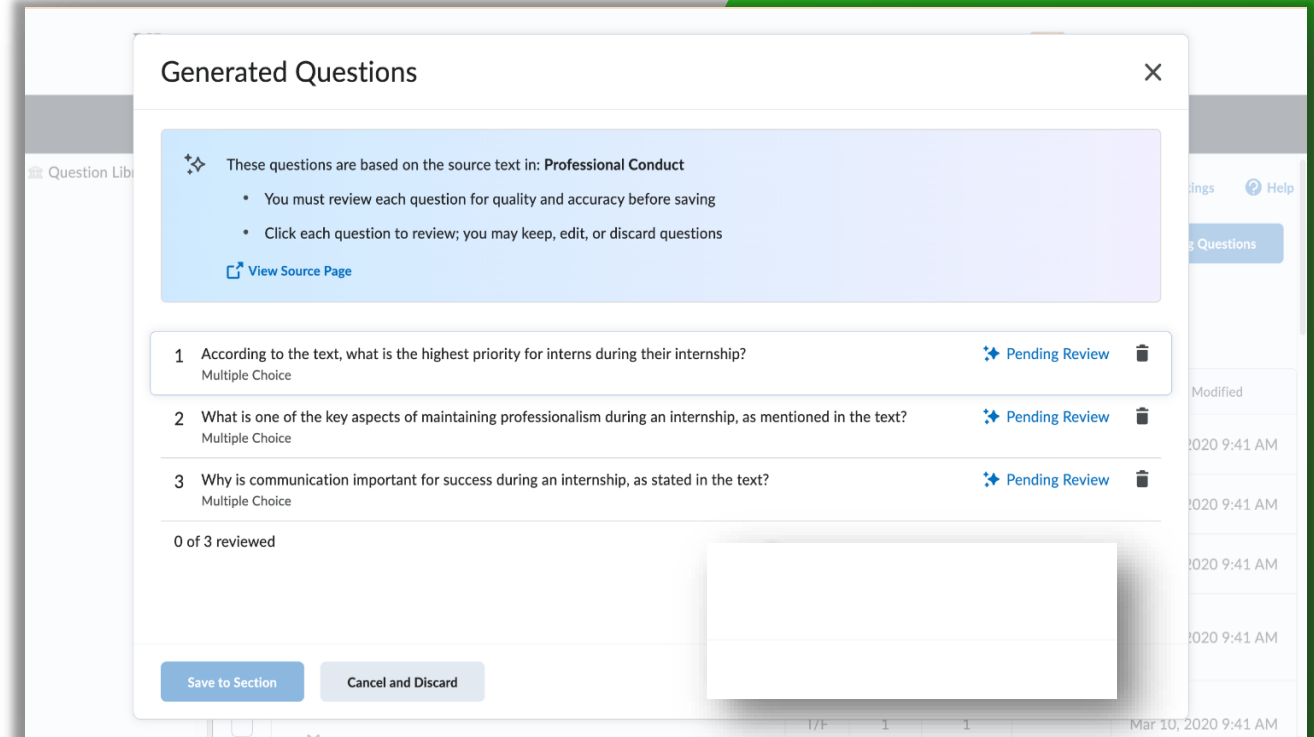
Lumi Captions

- Auto-generate captions for videos created or uploaded to the Media Library.
- Easily edit and support multiple languages in generated captions and transcripts.
- Record or upload captioned lessons and feedback for students from almost anywhere in the platform with VideoNotes™.



Lumi Quiz

- Easily generate assessment questions using existing content with AI technology.
- Save time and effort so educators can increase efficiency in their daily workflows.
- Allow educators to focus on learner engagement and success, rather than on the time-consuming task of quiz creation.



Lumi Idea

- Generate ideas when creating new assignments and discussions inspired by existing instructor content.
- Reduce the manual workload involved in creating formative assessments and ideas for testing.
- Save time and ensure that assessments are closely aligned with learning materials.

The screenshot shows a modal window titled "Generate Discussion Ideas" with a close button (X) in the top right corner. Inside the modal, there is a light blue informational box with a lightning bolt icon and text: "This AI tool will generate 3-5 possible ideas for a discussion prompt based on the HTML and document content in the current module: Week 2: Introduction to Marine Life. After generating, you can select a discussion idea to insert into your description field where you can edit it to suit your specific context." Below this box, there are two dropdown menus: "Number of Ideas*" set to "4" and "Bloom's Taxonomy" set to "Analyze". A note below the taxonomy dropdown states: "Optionally, you may select a Bloom's Taxonomy level appropriate for your assessment goals." Further down, under the heading "Content Source", there are two radio button options: "Include all activities in the module, 'Week 2: Introduction to Marine Life'" (which is selected) and "Select the activities you wish to include in your idea". At the bottom of the modal, there are two buttons: "Generate" (in blue) and "Cancel" (in light gray).

Lumi Practice

- Easily generate practice questions and ideas for practices from existing, instructor-built course content.
- Increase workflow efficiency and save time when formulating highly relevant knowledge check activities.
- Requires Creator+.

The screenshot shows the 'Insert Practice' interface. At the top, there's a dropdown menu set to 'Multiple Choice' and an 'Options' button. Below this is a light blue box containing a warning icon and text: 'This question is based on the source text provided. Check accuracy of the generated question before sharing with learners.' Inside this box is a 'Source Text' section with a text area containing the text: 'Understanding the Dynamics of Effective Team Communication Effective team communication is crucial for the success of any collaborative effort, whether in academic projects, workplace...'. Below the text area are three buttons: 'Regenerate Question', 'Edit Source Text', and 'Discard Question'. Below the light blue box is a 'Rate question quality' section with a thumbs up and thumbs down icon. At the bottom, there are input fields for 'Title' (with placeholder text 'Enter a descriptive title') and 'Short Description' (with placeholder text 'This text will not display in the learner view of the Practice. It appears in the published Practice placeholder for the Creator view only.'). On the right side, there's a question: 'What is a key aspect of effective team communication related to roles and responsibilities?' followed by the instruction 'Select the best option.' and four radio button options: 'Encouraging competition among team members', 'Allowing ambiguity in role assignments', 'Assigning roles based on individual strengths and expertise', and 'Discouraging clarity in roles and responsibilities'. At the bottom right is a blue 'Check Answers' button.

Lumi Data Analysis

Data Sets

- Lumi Utilization data available in Brightspace Data Sets.

Consumption Dashboard

- Displays an organization's total annual AI consumption and breakdown of activity by users.

Generative AI Consumption Dashboard

Brightspace Creator+

- Keep track of your organization's usage
- To enable Org Units, set them in the config variable d2l.Tools.GenerativeAI.isEnabled
- Only the Org Units and users who use this tool will appear here
- To increase your organization's limit contact your account representative

Annual consumption

Brightspace AI consumption quotas refresh annually. Your annual billing cycle is Jan 15.

14/10000 Generations

Consumption by User

August 2024

Last Name, First Name	Org Unit	Generations ▼
Perkins, Sasha	Sample Course (Id: 6686)	10
Davis, Jonathan	Brightspace Accessibility (Id: 6779)	3

Questions

Thank You!

www.d2l.com

www.d2l.com/lumi/