



# Digital Learning Workshop

New Brunswick Department of Education and Early Childhood Development

March 20, 2025

# Meet Your D2L Team



**Anneka Moline**

Manager, Solutions  
Engineering



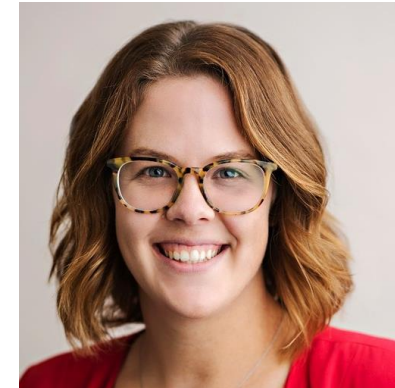
**Tim O'Connor**

Solutions Engineer



**Garima Chaturvedi**

Senior Technical  
Account Manager



**Melissa Heaman**

Senior Customer  
Success Manager

# D2L is your dedicated **learning partner**

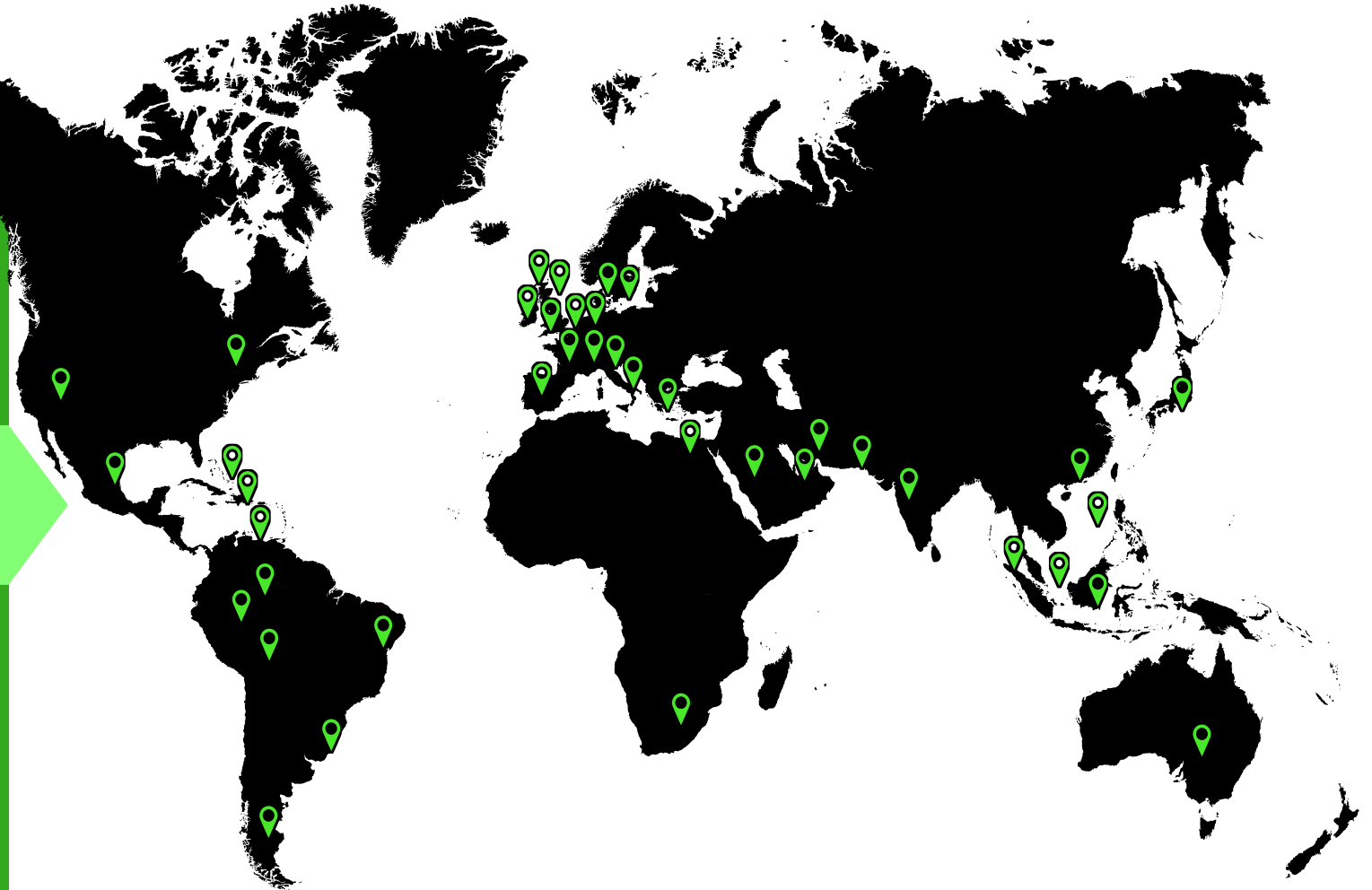
**20+** MILLION  
LEARNERS

**25+** YEARS  
SINGULAR MISSION

**40+** COUNTRIES

**1000+** EMPLOYEES  
WORLDWIDE

**1300+** CUSTOMERS  
AROUND THE GLOBE



<https://www.d2l.com/awards/>



A learning innovation platform built to help you create **highly personalized experiences** that unlock learner potential at scale.

## Digitize

### CLASSROOM

- Content & Video
- Collaboration & Communication
- Portfolios
- Assessment & Feedback

## Optimize

### OUTCOMES

- Release Conditions
- Nudges
- Special Access
- Gamification
- Outcomes & Analytics

## Transform

### EXPERIENCES

- Learner-centric
- Competency & Mastery-based
- Personalized

Works for everyone.  
Grows with you.

# Resources

---

D2L BRIGHTSPACE  
COMMUNITY

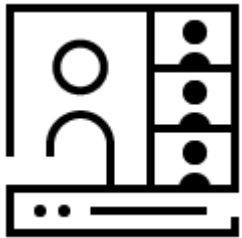
[Brightspace Community](#)



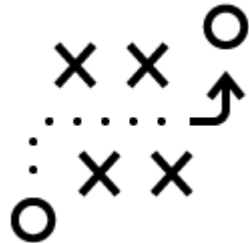
[Brightspace Learning Center](#)



[Bright Ideas for K12:  
Webinar Series](#)



[Brightspace Guided Training](#)



[Product Roadmap](#)



[D2L Events Page](#)

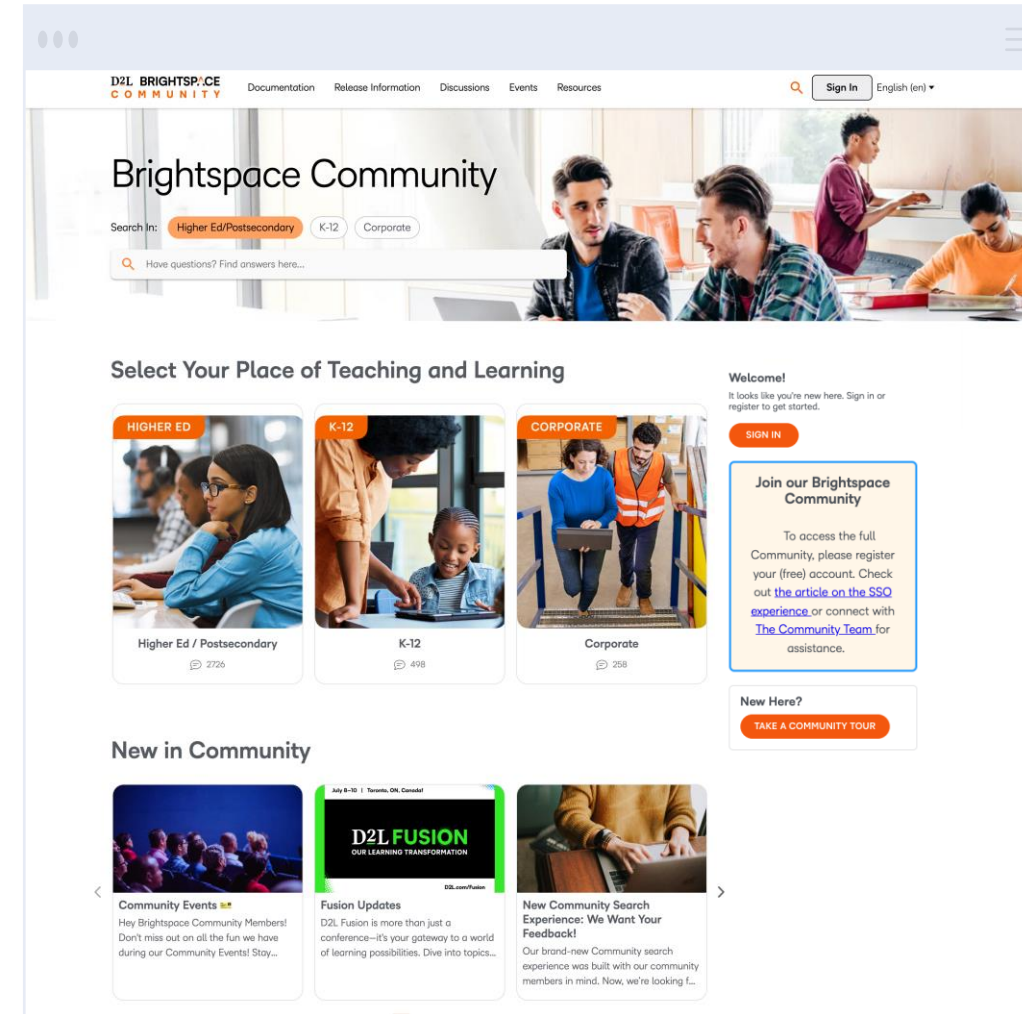
D2L  
FUSION

[D2L Fusion Conference](#)

# Community First

Your 24x7x365 one-stop-shop for Brightspace knowledge and connection

- ✓ Find answers to questions quickly.
- ✓ Connect with peers and D2L experts and propose product ideas and share knowledge.
- ✓ Powered by smart technology that serves up personalized, relevant content based on your role and what you are trying to accomplish.
- ✓ Interactive space that is actively monitored and continuously updated.

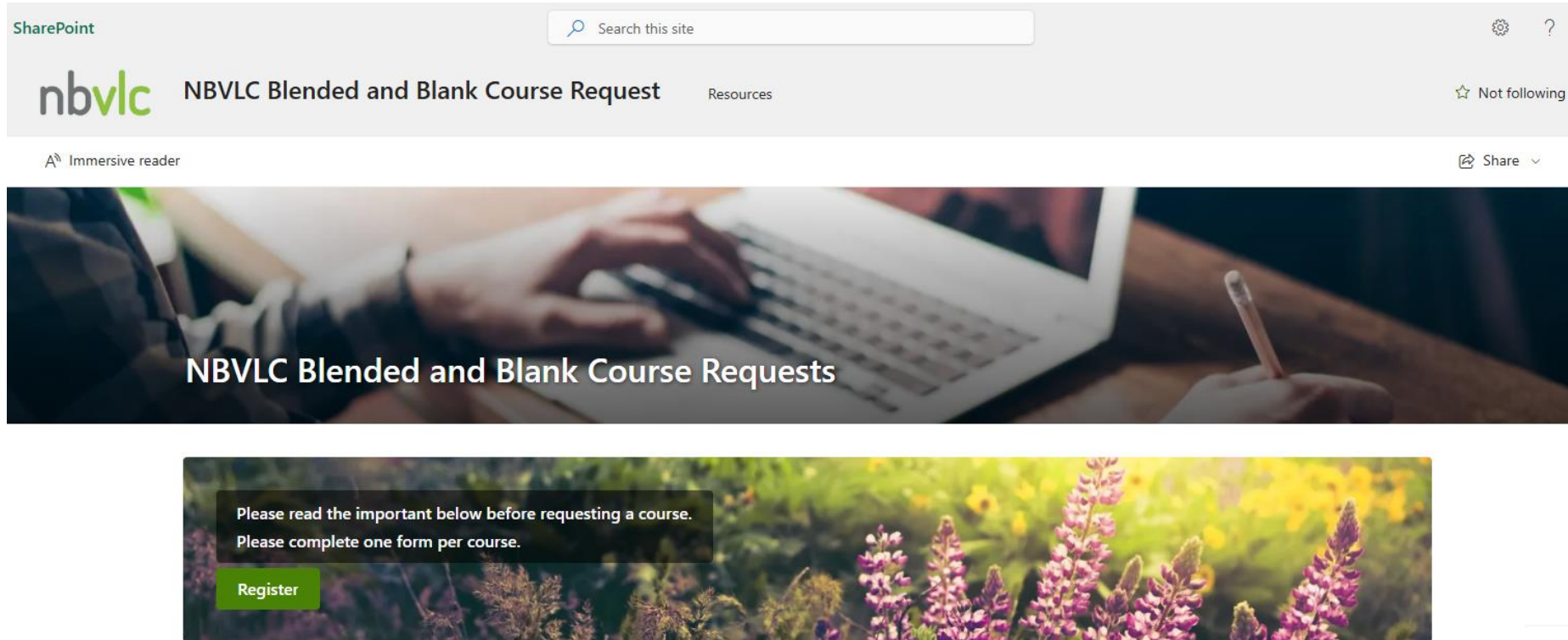


# Brightspace Sites in New Brunswick

- NBVLC: [nbvlc.nbed.nb.ca](http://nbvlc.nbed.nb.ca)
  - Used for virtual learning courses and classroom teachers (blended learning)
- Professional Learning (or PL) Hub: [plhub.nbed.ca](http://plhub.nbed.ca)
  - A collection of Professional Learning opportunities for New Brunswick educators



# How to request a course - Blended



*Last updated January 25, 2025*

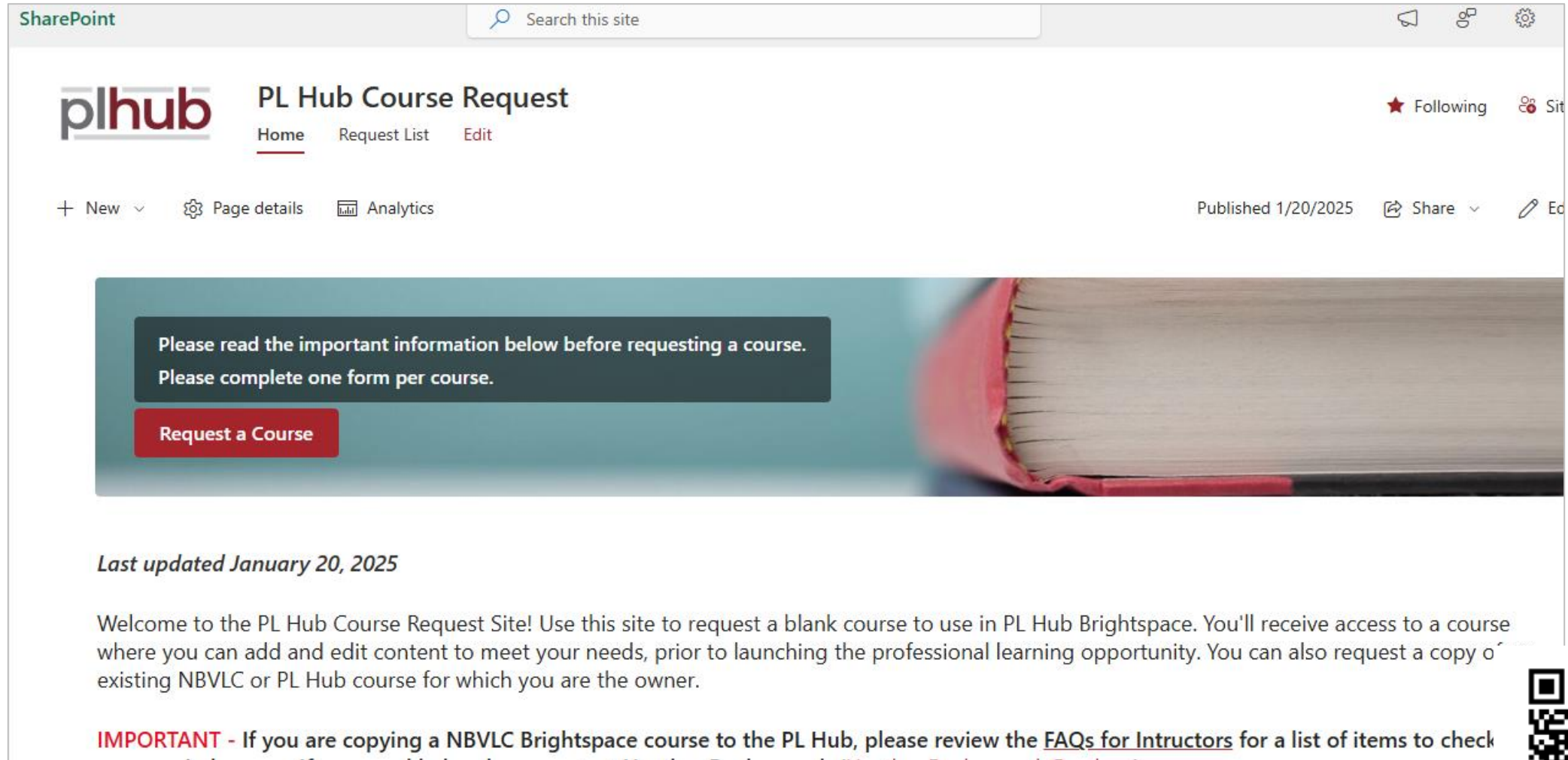
Welcome to the NBVLC Blended and Blank Course Requests Site! You can use this site to request a blank or blended courses to use in D2L Brightspace. You'll receive access to a course you can use with students, where you can add and edit content to meet your needs.

<https://nbed.sharepoint.com/sites/NBVLCBBC>





# How to request a course – Professional Learning



The screenshot shows the 'PL Hub Course Request' page on a SharePoint site. The page has a header with the 'plhub' logo, navigation links for 'Home', 'Request List', and 'Edit', and a search bar. A banner image of a book spine is on the right. A dark box contains the text: 'Please read the important information below before requesting a course. Please complete one form per course.' Below this is a red 'Request a Course' button. The page also shows 'Published 1/20/2025' and 'Share' options. At the bottom, there is a welcome message and an important note about copying NBVLC Brightspace courses.

SharePoint Search this site

plhub PL Hub Course Request

Home Request List Edit

+ New Page details Analytics

Published 1/20/2025 Share Edit

Please read the important information below before requesting a course.  
Please complete one form per course.

[Request a Course](#)

*Last updated January 20, 2025*

Welcome to the PL Hub Course Request Site! Use this site to request a blank course to use in PL Hub Brightspace. You'll receive access to a course where you can add and edit content to meet your needs, prior to launching the professional learning opportunity. You can also request a copy of existing NBVLC or PL Hub course for which you are the owner.

**IMPORTANT** - If you are copying a NBVLC Brightspace course to the PL Hub, please review the [FAQs for Instructors](#) for a list of items to check

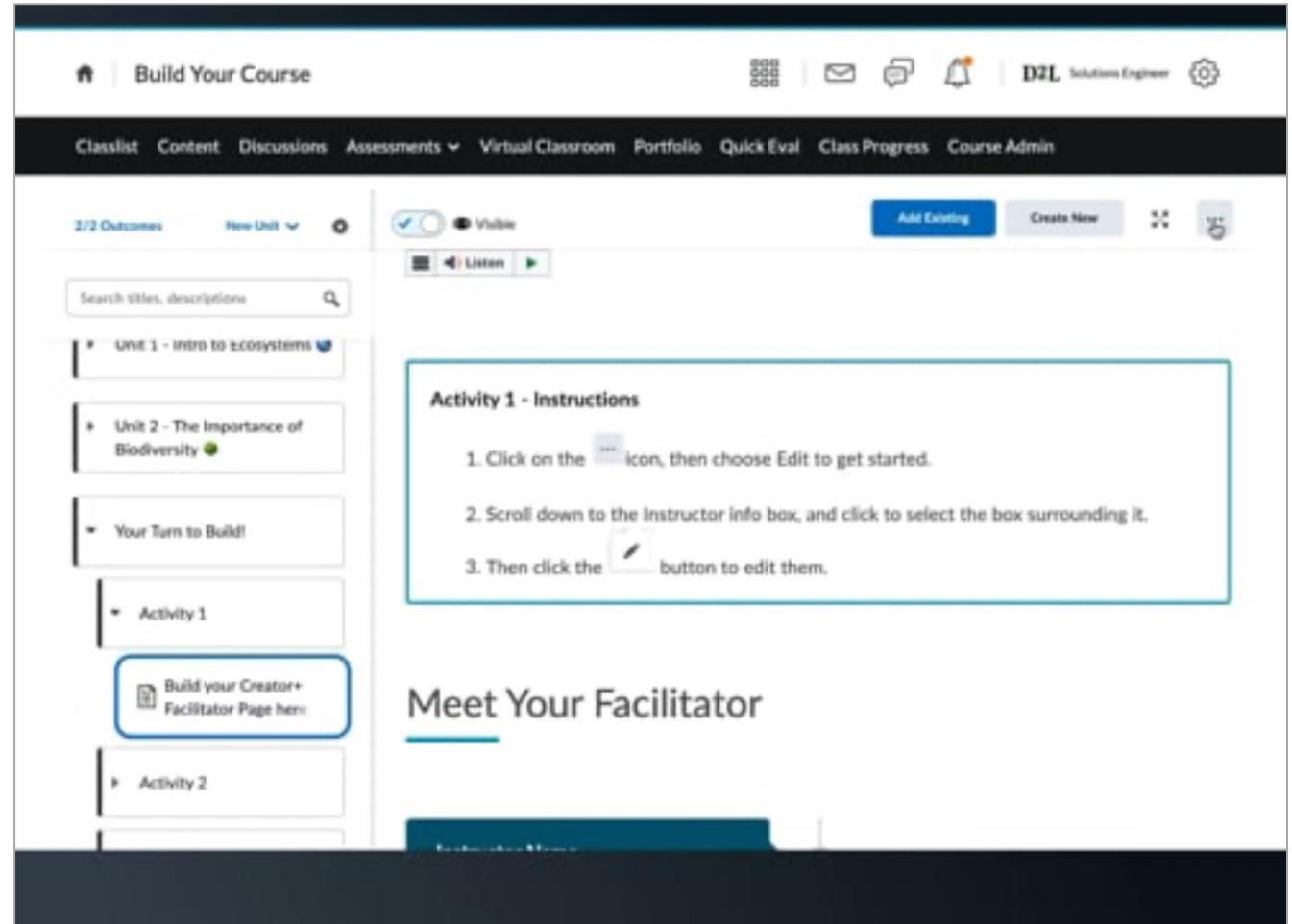
<https://nbed.sharepoint.com/sites/PLHubCourse>



# Activity 1: Creator+ Templates

Let's edit a content page using a Creator+ template:

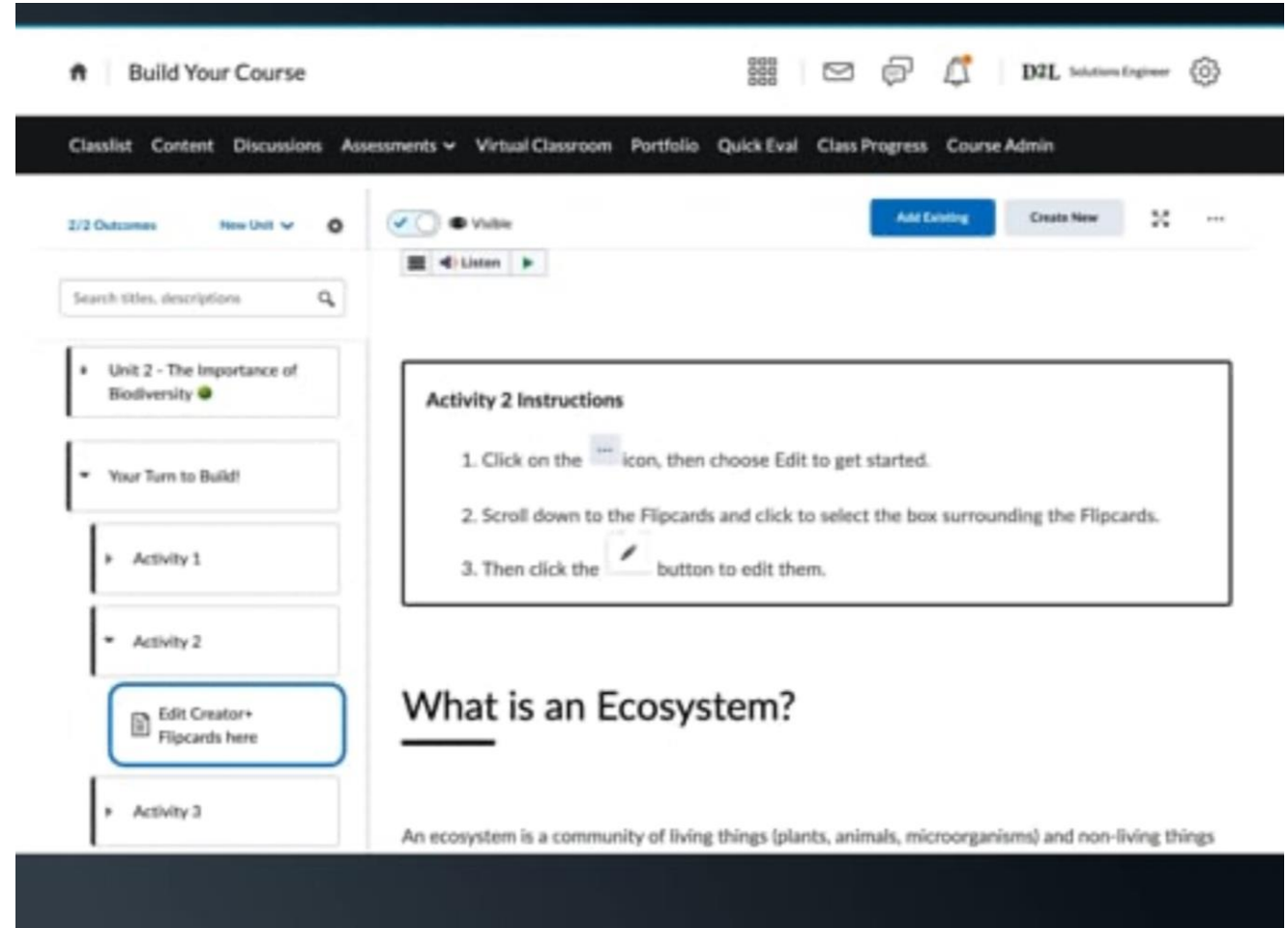
1. Login and go to **Build Your Course**
2. Then **Content – Your Turn to Build! – Activity 1 – Build your Facilitator page here**
3. Click **Edit** in the menu
4. Scroll to the facilitator area and click the pencil to edit



# Activity 2: Creator+ Elements

Let's edit a Creator+ Element on a content page:

1. Login and go to **Build Your Course**
2. Then **Content – Your Turn to Build! – Activity 2 – Edit Creator+ Flipcards here**
3. Click **Edit** in the menu
4. Scroll to the flipcards area and click the pencil to edit



# Activity 3: Lumi AI

Let's use Lumi to start a discussion for us:

1. Go to **Build Your Course**
2. Then **Content – Your Turn to Build! – Activity 3 – Item 1**
3. Click **Edit Activity** in the menu
4. Click to **Generate Discussion Ideas**

